



KONICA MINOLTA

# bizhub

C652/C552/C452  
C652DS

Enterprise Document Solutions. Evolved.



Model shown is C652 with options.

A4 Black & White **65** pages/min  
A4 Full Colour **50** pages/min  
bizhub C652/C652DS

A4 Black & White **55** pages/min  
A4 Full Colour **45** pages/min  
bizhub C552

A4 Black & White **45** pages/min  
A4 Full Colour **45** pages/min  
bizhub C452

The essentials of imaging



# The solutions of


Document Solutions For The Way You Work

When it comes to your document management needs, Konica Minolta has a range of products built to help you succeed. We call them The Solutions of i. These solutions, which include our extensive lineup of MFPs, printers, and software applications, were designed for you, the individual. They provide inspiration to help you be more creative, allow the rapid and seamless flow of information and offer easier integration with existing IT environments.

<http://www.solutions-of-i.com>



Model shown is C452.

**bizhub**   
**C452**





## Rethought, redesigned, reengineered. Remarkable.

Built on the success and prowess of our previous black bizhub, the new bizhub takes document solution technology even further. These new top-of-the-line models were redesigned and reengineered, with you in mind—to better accommodate the way you work. Primarily used as the central MFPs in large and mid-sized offices, these machines are now easier to use, produce higher quality documents, boast higher reliability and productivity, as well as lower TCO, and are compatible with a variety of network environments. From features that enable you to communicate and collaborate better; to management and security features that ensure accountability; to usable design that allows you to work more comfortably; the new bizhub gives you the technology you need to succeed. Take a look inside to see the numerous new or improved features and functions of this exceptional machine.



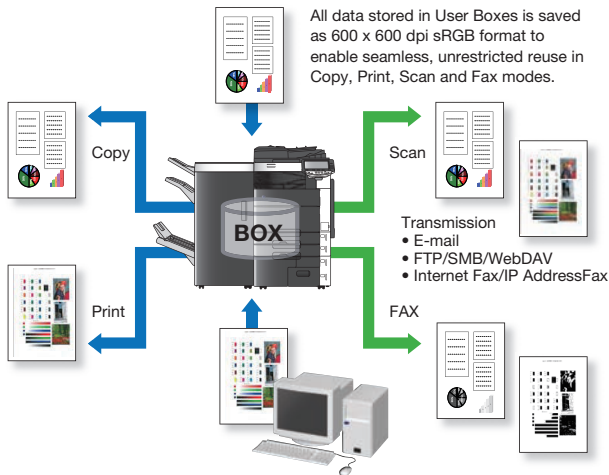
*Model shown is C552.*

**bizhub C652/C552**   
**bizhub C652DS** 

# Communicate more effectively.

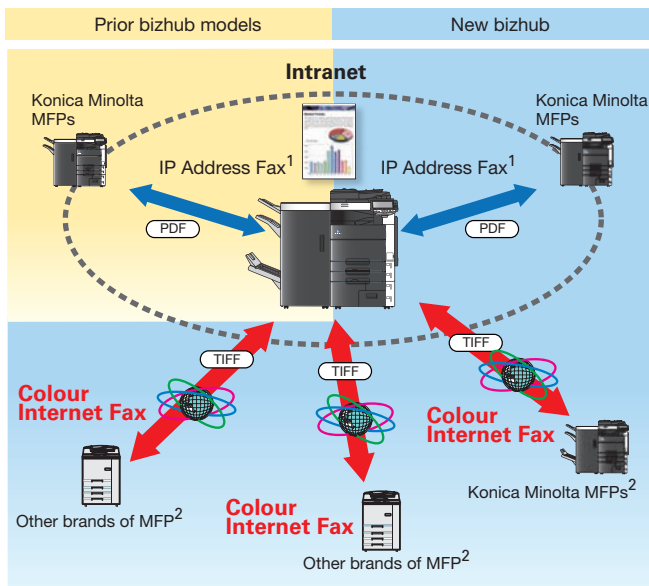
## Expanded Box Function

The new bizhub's hard disk drive Box function allows users to save scan, copy, print or fax data to the Box. It also permits boxes to be assigned to individuals, project teams, departments or themes for more reliable storage (up to 3,000 documents or 10,000 pages), seamless distribution and easier sharing of knowledge. Now, the Box also includes functionality that allows users to change print and send settings for files residing in the Box—switch from colour to black & white, change resolution, enlarge/reduce and more.



## New Colour Internet Fax

The bizhub's standard Colour Internet Fax allows you to cost-efficiently send a colour or black & white fax to any MFP that supports the Profile C standard, even machines outside of the intranet. Because this method uses the internet, no additional costs are associated with it.



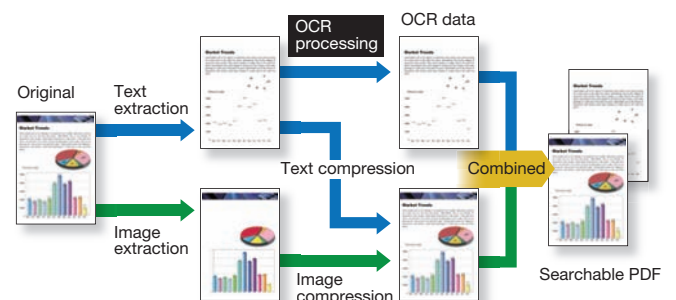
1 Optional Fax Kit FK-502 and Mount Kit MK-720 are required.  
2 MFPs supporting Profile C standard.



## New Searchable PDF\*

Normally, the text of a scanned document cannot be searched. Our Searchable PDF feature uses OCR (Optical Character Recognition) to turn any scanned document into a searchable one. Perfect for quickly finding text in large documents, or to cut and paste text from a Searchable PDF to create new documents.

\* Requires optional i-Option LK-105 and Upgrade Kit UK-203.





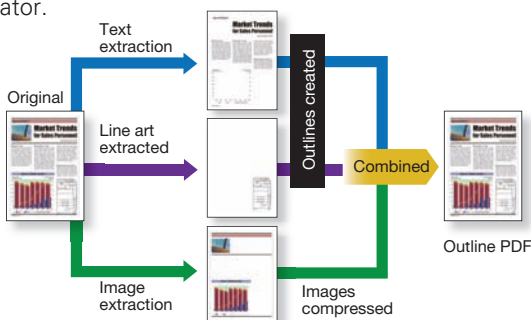
*From scanning to sending, the bizhub has made my work group more efficient than ever before. Especially when used with the bizhub's hard drive Box function. The bizhub allows me to scan a document and save it to the Box in any number of file formats, including Compact PDF/XPS, JPEG and TIFF. When using i-Option, I can also save documents as a Searchable PDF. The bizhub's colour Preview feature allows me to clearly see my scanned image on the control panel—perfect when viewing or sending saved scans. Finally, when I want to retrieve and send the data, I can choose to do so in black & white or colour and in many resolution sizes, which comes in handy when sending colour Internet faxes from the Box. These features are instrumental to our workflow and are ideal solutions for any business that shares or transfers colour documents frequently.*

*Account Manager  
Multinational Advertising Agency*

## The solutions of

### ■ New Outline PDF

By selecting Outline PDF when scanning a document, target images are divided into photo areas and text areas, and outline conversion is performed on the text areas. This makes the text easier to read, the images crisper and the document nearly as easy to handle as a Compact PDF. Image quality and data size of the photo areas can be finely adjusted in user mode, enabling the creation of highly-precise PDFs. The outlined data can also be conveniently utilised in graphics programs such as Adobe Illustrator.



### ■ i-Option

Select your i-Option functions based on your individual usage needs and environment. i-Option helps you enhance your bizhub's capabilities by offering greater convenience and customisation. Utilise the bizhub's control panel as a general purpose Web browser\* that enables PDF files to be previewed, downloaded and printed without a PC. The Image Panel function\* divides the control panel into three areas — input, edit and output and allows each to be customised based on your needs, thus improving your workflow.

### ■ Upgraded AJAX-Supported Web Browser

Our new i-Option, Web browser function can now utilise Web pages built using AJAX (Asynchronous JavaScript and XML). Many Web sites today, like Google Maps, use AJAX programming to asynchronously retrieve data without altering the display of the page being viewed.



\* Requires optional i-Option LK-101 v2 or LK-103 v2 and Upgrade kit UK-203.

### ■ Other New or Improved Features

- NEW Mobile Phone Services – Print Files/Reference Prints from Mobile Phones<sup>1</sup>
- NEW Automatic Access Key Display for USB Flash Memory Devices
- IMPROVED Fax/Scan Operability
- NEW Acquiring Address Information from the MFP when Using PC-Fax Transmission
- NEW Publication Service

### ■ Existing Features

- Super G3 FAX<sup>2</sup> •One-Scan ACS/Mixed Original Scanning
- Scan to E-mail •Scan to FTP •Scan to Box (HDD) •Scan to SMB •NetworkTWAIN •Scan to WebDAV •Scan to USB •WS-Scan •Multi-Method Send •XPS Support and DPWS •Compact PDF •PageScope Box Operator •PC-Fax Function<sup>2</sup> •IP Address Fax<sup>2</sup> •TSI Routing<sup>2</sup> •Fax Security Functions<sup>2</sup>
- Address Registration/Programmed Transmission
- Fax Sub Line<sup>3</sup> •Transmission Result Report •IPv6



<sup>1</sup> Requires the optional Local Interface Kit EK-605.

Not available in all areas.

<sup>2</sup> Optional Fax Kit FK-502 and Mount Kit MK-720 are required.

<sup>3</sup> Requires an installed Fax Kit FK502 for Fax Main Line as well as additional Fax Kit FK-502 for Fax Sub Line.

### ■ Options Required for Fax Features

	Fax Kit FK-502	Mount Kit MK-720
Super G3 FAX	✓	✓
Fax Sub Line	✓(See 3 above)	
PC-Fax Function	✓	✓
IP Address Fax	✓	✓
Internet FAX	Standard	

# Manage more securely and cost-effectively.

## ■ New Scan to Me and Scan to Home

Scanning to yourself is now easier than ever with Scan to Me. If user authentication is set, selecting the "Me" one-touch key in the address book allows scan data to be sent to the user's own e-mail address. Use the Scan to Home feature to send the data to a registered PC. These simple but useful security features allow administrators to limit or disable any scan and send traffic outside of these ranges, effectively restricting where scans can be sent.



## ■ New Log Management

Our new log management features help you better manage usage and costs for your office's new bizhub. The log has been expanded to allow logs to be compiled for counts and accounts, as well as the existing capability for audits. This means that the bizhub doesn't just record which users have performed which jobs. It also records paper size, number of copies made and other useful cost and resource management information.

## ■ PageScope Enterprise Suite

The Web-based PageScope Enterprise Suite provides you with solutions to empower your MFP as well as your business by offering centralised management of accounting, authentication and device information. The suite includes Account Manager, Authentication Manager, My Panel Manager and Net Care Device Manager, and systematically links applications, integrating and sharing them seamlessly on one server. This results in much easier operation and better-integrated management.

## ■ Improved Non-Contact IC Card Authentication

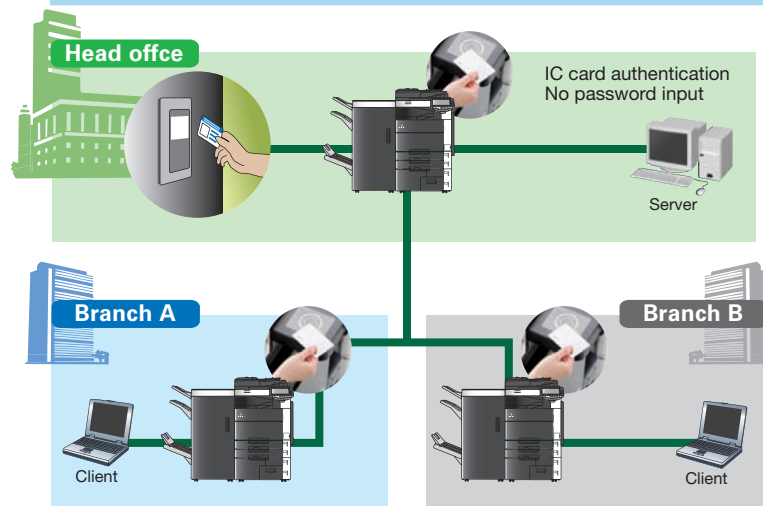
Perfect for individual user authentication, IC cards allow your organisation to restrict copy, print, scan and fax functions. For the new bizhub, a function has been added that allows LEGIC\*, MIFARE\* and FeliCa\* (SSFC Format/FCF Format) cards to be used to access data in high-security areas, making it possible to perform high-level, multi-functional authentication management, such as synched operation with room entry and exit management.

\*Optional Authentication Unit AU-201 required.



*In a large and dispersed company like ours we need IT solutions that help us stay secure. With our bizhub, we're able to utilise PageScope Enterprise Suite software, specifically Authentication Manager, to administer all of the bizhub's security measures, like the use of our Non-Contact IC Card Authentication. Though providing a high level of security, the bizhub's tools have proved surprisingly easy to use and versatile. IC Card*

*IT Solutions Architect  
Insurance Company*





authentication is password-free and helpful to us in numerous ways. Its primary utilisation is as an authentication method for the bizhub that permits employees to make use of the bizhubs on different floors, in different departments, or even at a branch office. Its flexibility has also allowed me to utilise the card throughout the organization for entry and exit management, as an employee ID card. In short, these solutions help me, and my company, rest easy.

## The solutions of

### ■ Improved Biometric Finger-Vein Authentication\*

The bizhub's finger vein authentication uses images of finger vein patterns captured by scanning the finger. This biometric measurement uses an internal characteristic as identification, and is nearly impossible to falsify. The unit is remarkably easy to install as an option and now offers improved authentication accuracy and a more ergonomic and efficient shape that blends in with the design of the MFP.

\*Optional Authentication Unit AU-102 required.



### ■ ID & Print

Working in conjunction with finger-vein and IC card authentication, our easy-to-use ID & Print feature provides you with a secure printing environment. After sending a document from your PC to the bizhub, simply touch the bizhub with your finger or IC card to automatically begin printing—there's no need to enter a password. If you choose, you can also use the ID & Print feature without the biometric unit or IC cards by entering your password directly on the control panel.

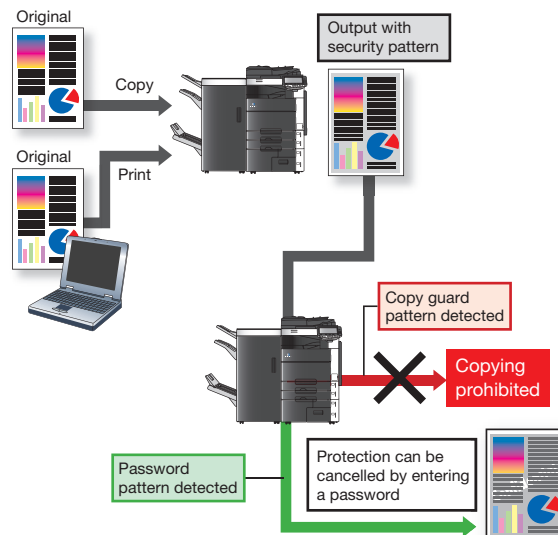


### ■ Copy Security (Copy Guard and Password Copy)\*

By copying or printing documents with a special security pattern, C652/C552/C452/C652DS's Copy Guard prevents unauthorised copies from being made on the C652/C552/C452/C652DS's. The Password Copy feature allows this protection to be cancelled by entering a password before attempting to re-copy the document.

\* Optional Security Kit SC-507 is required.

Work only on bizhubs with these features installed.



### ■ New IEEE 802.1X Compatibility

The new bizhub now comes with a client module supporting the IEEE 802.1X authentication standard. This enables you to connect to secure networks, effectively shutting off all communication from unauthorised clients, and only allowing authorised users to connect.

### ■ Other New or Improved Features

- NEW Standard HDD Data Encryption
- NEW NDS Authentication over TCP/IP

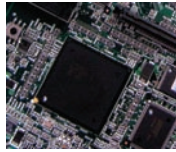
### ■ Existing Features

- Secure Print •User Authentication
- Encrypted PDF •Copy Protection
- Annotation Function •IP Filtering
- SSL/TLS Encryption •S/MIME •HDD Auto Deletion
- HDD Lock •Department Management
- PageScope Data Administrator
- PageScope Workware (Optional)

# Increase productivity and performance.

## ■ High Image Quality

The new bizhub employs a new MFP Controller—the heart of the MFP—and a new image ASIC (application-specific integrated circuit). Due to these new technologies, overall image quality is markedly improved.



## ■ Higher Productivity

The new bizhub enhances productivity with high-speed printing, copying and scanning, as well as significantly reduced product downtime. To start with, the machine's warm-up time has been greatly decreased\*. The new bizhub also boasts one of the fastest first copy times on the market. Furthermore, these machines can promptly handle multiple jobs simultaneously such as fax and scan, scan and print, and print and save to Box. Single pass high-speed duplex scanning is adopted for the C652DS for unparalleled productivity. The C652/C552/C452 also have a sheet-through high-speed duplex Automatic Document Feeder (ADF) allowing colour documents to be scanned at the same high speed as black & whites, and large volumes of documents to be converted into electronic data. The ADF can also handle postcard-size paper, and scan thick and thin paper (35 to 210g/m<sup>2</sup>) at the same speed as plain paper.

### Print Productivity

■ C652/C652DS	: 50 ppm Colour, 65 ppm B/W
■ C552	: 45 ppm Colour, 55 ppm B/W
■ C452	: 45 ppm Colour, 45 ppm B/W

### First Copy Time

■ C652/C652DS	: 5.5 sec. or less Colour, 3.8 sec. or less B/W
■ C552	: 6.0 sec. or less Colour, 4.3 sec. or less B/W
■ C452	: 6.0 sec. or less Colour, 4.8 sec. or less B/W

\* A4 crosswise/full size/using the first tray/scanning from the original glass surface.

### Warm-up time

■ C652DS	: 39 sec. or less
■ C652/C552/C452	: 45 sec. or less

\* The time required to start printing when both the main power and subpower switches are turned from OFF to ON. (23°C, std. voltage)

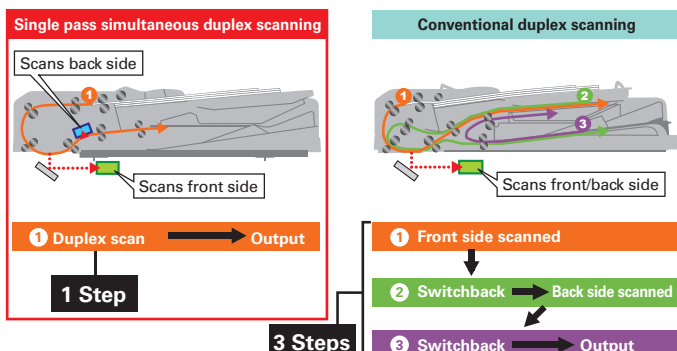
\* Warm-up time may vary depending on the operating environment and usage.

### Scan Productivity (300dpi, A4 Crosswise) \*Max.

■ C652/C652DS/C552/C452	: 78 opm Colour, B/W (simplex scanning)
■ C652DS	: 156 opm Colour, B/W (duplex scanning)

## ■ Single Pass High-Speed Duplex Scanning (C652DS)

The C652DS makes it possible to scan both sides of duplex documents in a single pass, greatly improving scanning and copying productivity. And as the duplex originals no longer need to be turned over in the ADF paper path, damage to the originals is minimised.



## ■ Upgraded Emperon Print System

Konica Minolta's proprietary Emperon printer controller boasts a host of new features, functions and compatibilities designed to increase print performance, making it our best Emperon ever.



•**Black Over Print\*** This new feature helps ensure that areas meant to be in black are not inaccurately rendered in white — a potential problem when printing black on colours during 4-colour printing.

•**Auto-Trapping\*** In Auto-Trapping Mode, the white borders between colours are printed using an optimal colour from surrounding colours, eliminating incorrect registration.

•**PPML-Variable Data Printing (VDP)\*** The new bizhub now supports PPML (Personalised Print Markup Language), a technology designed for high-speed variable printing output.

•**Support for PDF 1.7** The new bizhub supports the PDF 1.7 version. This enhanced PDF version offers more interactive printing, security and CMM (Colour Management Module) features.

\* Used in conjunction with PS Print.



With over 3,000 faculty members on the main campus competing for production time, speed is essential to us here at the university, but not at the expense of quality or high downtime. Luckily, we don't have to sacrifice any of these attributes with the bizhub. These machines churn out up to 50 high quality colour pages\* per minute. The Multi Job feature is also indispensable because it allows our faculty to perform multiple actions at the same time, like scanning and sending or scanning and printing. This means that when a professor or his assistant comes running into the office 15 minutes before class, they're going to get what they need to get done easily and efficiently and with minimal downtime.

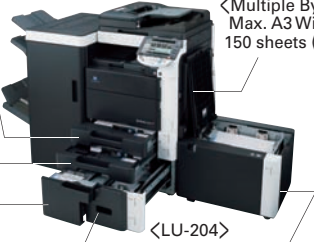
\*bizhub C652/C652DS

Director of Faculty Operations  
Large University

## The solutions of

### Large-Capacity Paper Supply and Varied Paper Compatibility

The new bizhub holds up to 3,650 sheets of paper. With the optional Side Paper Deck LU-301, the bizhub's capacity increases to 6,650 sheets! The bizhub handles a wide range of paper size from A6 to A3 wide, with our new, optional, large-capacity LU-204 also boasting an impressive A3 wide capacity. Finally, the bizhub also accommodates thick paper up to 256g/m<sup>2</sup> in all but its multiple bypass tray, where it handles paper as thick as 300g/m<sup>2</sup>.



<Tray 1>  
Max. A3 Wide  
500 sheets (80g/m<sup>2</sup>: A4)

<Tray 2>  
Max. A3 Wide  
500 sheets (80g/m<sup>2</sup>: A4)

<Tray 3>  
Max. A4  
1,500 sheets (80g/m<sup>2</sup>)

<Tray 4>  
Max. A4  
1,000 sheets (80g/m<sup>2</sup>)

<Multiple Bypass tray>  
Max. A3 Wide  
150 sheets (80g/m<sup>2</sup>)

<LU-204>  
Max. A3 Wide  
2,500 sheets (80g/m<sup>2</sup>)

<LU-301>  
Max. A4 3,000 sheets (80g/m<sup>2</sup>)
















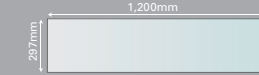
<MK-715>  
Holds 10 sheets of Long Length Paper up to 297mm x 1,200mm

Not compatible with Finisher FS-526

### Professional and Versatile Finishing

Create professional presentations, attractive manuals, proposals, banners<sup>1</sup> and even direct mail without ordering through a printer. Get print-on-demand versatility by combining the C652/C552/C652DS with the optional FS-526 finisher, or the C652/C552/C452/C652DS with the optional FS-527 finisher. These high performance finishers feature automatic stapling, hole punching<sup>2,3</sup>, saddle stitching<sup>4,5</sup>, Z-folding<sup>6</sup> and many other finishing tasks, allowing you to take on both large and small-volume jobs in-house.

- 1 C652/C552/C452/C652DS: Optional Banner Paper Setting Guide MK-715 is required.
- 2 FS-526: Optional Punch Kit PK-516 or Z-Folding Unit ZU-606 is required.
- 3 FS-527: Optional Punch Kit PK-517 is required.
- 4 FS-526: Optional Saddle Stitcher SD-508 is required.
- 5 FS-527: Optional Saddle Stitcher SD-509 is required.
- 6 FS-526: Optional Z-Folding Unit ZU-606 is required.

Finishing Tasks and Necessary Options			
<b>Stapling Function</b>	 Corner staple  2-point staple (Side)	Finisher FS-526 Up to 100 sheets	Finisher FS-527 Up to 50 sheets
<b>Booklet Function &amp; Folding Function</b>	 Centre staple and folding  Fold  Tri-Fold (SD-508 only)	Finisher FS-526 + Saddle Stitcher SD-508 Up to 20 sheets	Finisher FS-527 + Saddle Stitcher SD-509 Up to 15 sheets
<b>Z-Folding Function &amp; Hole Punching Function<sup>7</sup></b>	 Z-Fold  Hole Punching  Z-Fold + Hole Punching	Finisher FS-526 + Z-Folding Unit ZU-606	
<b>Hole Punching Function</b>	 2-hole  2-hole top  4-hole	Finisher FS-526 + Punch Kit PK-516 Punch paper up to 300g/m <sup>2</sup>	Finisher FS-527 + Punch Kit PK-517 <sup>8</sup> Punch paper up to 256g/m <sup>2</sup>
<b>Cover Sheets &amp; Inter Sheets</b>	 Cover Sheets  Inter Sheets	Standard or Finisher FS-526 + Post Inserter PI-505	Standard
<b>Long Length Paper</b>	 Print banners up to Max. 1,200mm long.	Banner Paper Setting Guide MK-715 Not compatible with Finisher FS-526.	Banner Paper Setting Guide MK-715

<sup>7</sup> Optional ZU-606 (which includes Hole Punching Function) supports paper ranging from 64 to 90 g/m<sup>2</sup>.

<sup>8</sup> The number of holes for optional Punch Kit PK-517 will differ according to area.

### Other New or Improved Features

- NEW Non-Image Area Erase
- NEW Watermark Copy Function
- IMPROVED Overlay Function
- NEW Card Shot
- NEW Fiery Image Controller IC-412 (Optional)

### Existing Features

- 100% Duplex Productivity
- ADF Dust Reduction
- ICC Profile Supported (PS Driver only)
- Booklet Printing
- Print Status Notification
- Confirming Copy/Print Jobs

# Designed for the way you work.

## ■ Improved Colour LCD Control Panel

The bizhub's innovative control panel offers an 8.5-inch 800 x 480 pixel, colour touch-screen LCD display with the ability to enlarge text. The blue LED start button and indicator lamps on the control panel are easy to read, particularly for those with colour vision difficulties. The entire panel can also be tilted left and right as well as up and down in 3 stages, making it accessible to just about anyone. The panel also features a convenient stylus pen and holder.



## ■ New Guidance Workflow and Animation Guidance

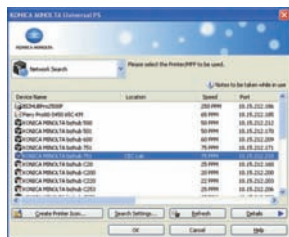
The new bizhub features new help functions to enhance workflow. Simply press the "Guidance" key for immediate help information relevant to the feature you're currently engaged with. An interactive Animation Guidance is also available for certain features and troubleshooting tasks. This provides more visual direction of operating tasks and troubleshooting help for procedures such as paper jams and toner replacements.

Animation Guidance for Troubleshooting



## ■ Universal Printer Driver

Konica Minolta's state-of-the-art Universal Printer Driver (UPD) allows the new bizhub to be managed with other Konica Minolta MFPs and printers from a single driver.

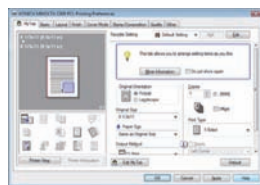


With the UPD, you can even print while away on business at a branch office without having to install a new driver. For added convenience, the UPD also allows you to use the basic functions of third-party devices.

- \* The UPD must be downloaded from the Konica Minolta website (free of charge).
- \* Applicable functions with the UPD will vary according to device.

## ■ My Tab Printer Driver Screen

Customise your own tab on the printer driver screen. Add, remove or change the location of features to suit your needs.



## ■ Quiet Operation

The new bizhub offers quieter operation. We have paid particular attention to the more bothersome machine noises, and have reduced the operating noise level, as well as that of stand-by mode, ADF scanning and our finisher.

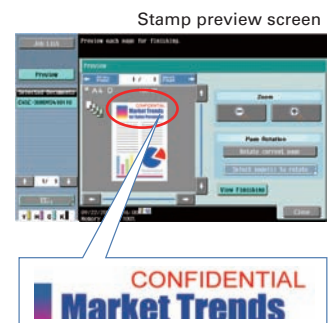


*For me, so much of my success relies on how easily and efficiently I can get my work done. With that said, very few machines have made my job as trouble-free as the bizhub. The colour, LCD control panel is large, easy-to-read and intuitive. I especially appreciate its large colour Thumbnails and Previews. The My Panel Manager software, part of PageScope Enterprise Suite, is also very useful. In tandem with personal authentication, it allows my coworkers and I*

*Administrative Assistant,  
International Management Consulting Company*

## ■ Expanded Colour Previews & Thumbnails

See exactly what your image will look like before printing it. The new bizhub lets you view previews of stamps, dates, pages and more as merged images, to show you exactly how your documents will appear printed. Viewing files saved in the Box is also easier and more efficient—view them all on the control panel as thumbnails for simple file recognition.





to interface with the product in the language of our choice, essential in an international company like mine, and it lets us customise the address book. Troubleshooting and operation are also remarkably easy. If I'm ever unsure about a task, the bizhub's interactive Animation Guidance offers the assistance I need. Lastly, the bizhub is aesthetically pleasing too, with a 360-degree, wrap-around design and extremely quiet operation.

The solutions of 

### ■ 360-Degree Universal Design

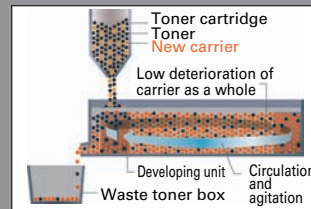
The new bizhub's 360-degree design is made to look clean from any angle. A covered storage area on the back allows Firey cables to be put away for a clutter-free look from all angles. The new bizhub's universal design allows anyone, regardless of age, gender, body size or disability to enjoy trouble-free usage.



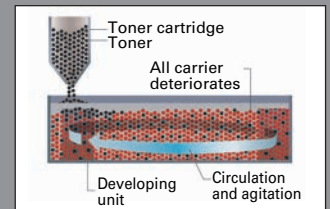
## Technology Design

### ■ New Auto-Refining Developing System

With the new bizhub's Auto-Refining Developing System, carrier in the black developing unit is premixed in the toner cartridge and supplied as toner is consumed. Deteriorated carrier is expelled with the toner, reducing overall deterioration in the developing unit. This process helps to maintain stable black & white image quality over the long term. This feature is particularly relevant in offices that have high-volume black & white output.



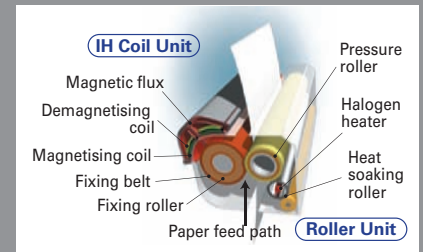
•Auto-Refining Developing System



•Conventional Developing System

### ■ IH Fixing

Induction Heating (IH) Fixing technology only heats the roller's surface, rather than the entire roller. This reduces power consumption during the fixing process and results in shorter warm-up times. In addition, this feature automatically reduce residual fixing heat when no print jobs are taking place, further contributing to energy savings.

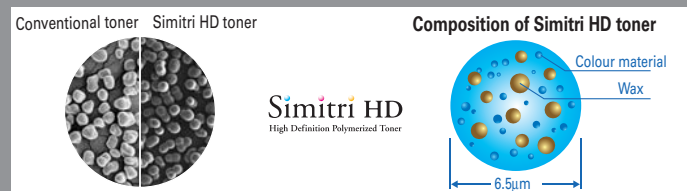


### ■ Three Image Stabilisation Modes

We've optimised image stabilisation control by providing three separate modes tailored to your office's printing needs. Standard Mode is perfect when overall print volume is low and colour usage is moderate. B/W Priority Mode is the best for those offices that mostly utilize black & white printing. Finally, Colour Priority Mode is the alternative that offers the most image stabilisation efficiency for high volume, colour output needs.

### ■ Simitri HD Toner

The small size and consistent shape of Simitri HD toner particles ensure sharp reproduction of text as well as line drawings. Its smooth outer surface provides excellent hold and promises high image quality across a diverse media mix. Furthermore, the new bizhub uses low-temperature fixing to affix the Simitri HD toner. Using less heat saves energy and effectively reduces paper stress.



## bizhub C652/C552/C452/C652DS General Specifications

Type	Console
Colour Support	Full-Colour
Copy Resolution	Main: 600dpi x Sub: 600dpi
Scan	Main: 1,800dpi equiv. x Sub: 600dpi
Print	
Gradation	256
Memory Capacity (Std./Max.)	2GB/3GB
HDD	250GB
Original Type	Sheets, Books, Objects
Max. Original Size	A3 (11" x 17")
Output Size	A3 Wide, A3 to A5, B6S <sup>1</sup> , A6S <sup>1</sup> Thick Paper, Long Length Paper (210x457.3mm-297x1,200mm)
Image Loss	Max. 4.2mm or less for top edge, Max. 3.0mm or less for bottom edge, Max. 3.0mm or less for right/left edges
Warm-Up Time (23°C, std. voltage) (May vary depending on the operating environment and usage.)	C652/C552/C452: 45 sec. or less C652DS: 39 sec. or less (The time required to start printing when both the main power and sub-power switches are turned from OFF to ON.) 30 sec. or less (The time required to start printing when the main power switch is ON and the sub-power switch is turned from OFF to ON.)
First Copy Time <sup>2</sup>	Colour: C652/C652DS: 5.5 sec. or less C52: 6.0 sec. or less C452: 6.0 sec. or less B/W: C652/C652DS: 3.8 sec. or less C52: 4.3 sec. or less C452: 4.8 sec. or less
Copy Speed (A4 Crosswise)	Colour: C652/C652DS: 50 ppm C52: 45 ppm C452: 45 ppm B/W: C652/C652DS: 65 ppm C52: 55 ppm C452: 45 ppm
Copy Magnification	Fixed Same Magnification: 1:1±0.5% or less Scaling Up: 1:1.154/1.224/1.414/2.000 Scaling Down: 1:0.866/0.816/0.707/0.500 Preset: 3 types Zoom: 25-400% (in 0.1% increments) Lengthwise Crosswise Individual Settings: 25-400% (in 0.1% increments)
Paper Capacity (80g/m <sup>2</sup> paper)	500 sheets (Tray 1), 500 sheets (Tray 2), 1,500 sheets (Tray 3), 1,000 sheets (Tray 4), 150 sheets (Multiple Bypass Tray)
Paper Weight	Tray 1-4: 64-256g/m <sup>2</sup> Multiple Bypass Tray: 64-300g/m <sup>2</sup>
Multiple Copy	1-9,999 sheets
Auto Duplex	Type: Non-Stack Paper Size: Width/100-311mm (4"-12-1/4"), Length/148-457mm (5-3/4"-18") Paper Weight: 64-256g/m <sup>2</sup>
Power Requirements	AC220-240V 10A (50 to 60Hz)
Max. Power Consumption	C652/C652DS: 2.1kW or less C52: 2.0kW or less C452: 2.0kW or less
Dimensions [W] x [D] x [H]	650mm x 879mm x 1,155mm (25-1/2" x 34-3/4" x 45-1/2")
Weight	C652/C552/C452: Approx. 221kg (487-1/4lb) C652DS: Approx. 223kg (491-3/4lb)
Space Requirements [W] x [D]	988mm x 1,525mm (39" x 60") *Multiple Bypass Tray opened

<sup>1</sup> S. Short edge feed <sup>2</sup> A4 full size/using the first tray/scanning from the original glass surface.

## Printer Specifications (Standard)

Type	Embedded
CPU	MC744B 1GHz
Memory	Shared with the copier
Print Speed	Same as Copy Speed (when using the same original)
HDD	250GB (Shared with the copier)
Print Resolution	1,800dpi equiv. x 600dpi
PDL	PCL6, PCL5, PostScript 3, XPS
Protocol	TCP/IP, IPX/SPX (NDS support), SMB (Net BEUI), LPD, IPP1.1, SNMP, HTTP
Support OS	Windows NT4.0 SP6/2000, SP3/XP/XP64bit/Vista/Vista64bit/Server2003/Server2003 64bit/Server2008/Server2008 64bit/Mac OS 9.2(PPD)/X 10.2,3,4,5/10.4,5 Intel, Linux
Fonts	80 European fonts
PCL	137 European Type1 fonts
PS	
Interface	Ethernet (10BASE-T/100BASE-TX/1000BASE-T), Hi-Speed USB

## System Options

**Punch Kit PK-517**  
Attach to Finishers FS-527 for hole punching capability (paper up to 256g/m<sup>2</sup> thick)

**Saddle Stitcher SD-509**  
Attaches to Finisher FS-527 for saddle stitching and half folding jobs.

**Staple Kit SK-602**

**Post Inserter PI-505**  
When attached to Finisher FS-526, allows you to add white paper cover sheet/inter sheet, and operate the Finisher manually.

**Saddle Stitcher SD-508**  
Attaches to Finisher FS-526 for saddle stitching, half folding and tri-folding jobs. Its output tray, a Universal Design feature, allows paper removal from as low as 381mm above the floor.

**Staple Kit MS-5C**

**Staples MS-10A**

**Job Separator JS-504**  
When attached to the C452, this becomes the fax/print/copy internal output separator tray.

**Job Separator JS-603**  
When attached to the FS-527, this becomes the fax/print/copy output separator tray.

**Job Separator JS-602**  
When attached to the FS-526, this becomes the fax/print/copy output separator tray.

**Punch Kit PK-516**  
Attach to Finishers FS-526 for hole punching capability (paper up to 300g/m<sup>2</sup> thick)

**Z Folding Unit ZU-606**  
Includes Z-folding function and hole punching function.

**Fiery Image Controller IC-412**  
**Video Interface Kit VI-505**

**Fax Kit FK-502**  
**Stamp Unit SP-501**  
**Spare TX Marker Stamp 2**

**Mount Kit MK-720**  
Includes Fax Sub Line Connector.

**Keyboard Holder KH-101**

**Scan Accelerator Kit SA-502**  
\*Cannot be used together with the fax sub line.

**Working Table WT-506**

**Banner Paper Setting Guide MK-715**  
Used for banner printing. (Not compatible with Finisher FS-526)

**Large Capacity Unit LU-204**  
Increases the bizhub's paper capacity by 2,500 sheets for paper up to A3 wide and 80g/m<sup>2</sup> thick.

**Large Capacity Unit LU-301**  
Increases the bizhub's paper capacity by 3,000 sheets for paper up to A4 size and 80g/m<sup>2</sup> thick.

**Upgrade kit UK-203**  
**i-Option LK-101 v2**  
**i-Option LK-102**  
**i-Option LK-103 v2**  
**i-Option LK-105**

**Security Kit SC-507**  
**Authentication Unit AU-102 (Biometric type)**  
**Authentication Unit AU-201 (IC card type)**  
**Key Counter Mount Kit 1**

**Local Interface Kit EK-604**  
**Local Interface Kit EK-605**  
\*Not available in all areas.

For more information please visit the bizhub Web site at <http://www.bizhubc652.com>

Product appearance, configuration and/or specifications are subject to change without notice.

The Konica Minolta logo and the symbol mark, and "The essentials of imaging" are registered trademarks or trademarks of KONICA MINOLTA HOLDINGS, INC.

bizhub, bizhub PRESS, Magicolor, PagePro, PageScope, Simitri and S.E.A.D. are registered trademarks or trademarks of KONICA MINOLTA BUSINESS TECHNOLOGIES, INC.

All other Konica Minolta brand and product names are registered trademarks or trademarks of KONICA MINOLTA BUSINESS TECHNOLOGIES, INC.

Windows is a registered trademark of Microsoft Corporation in the United States and other countries.

Adobe and PostScript are registered trademarks or trademarks of Adobe Systems Incorporated.

All other brand and product names are registered trademarks or trademarks of their respective owners.

**KONICA MINOLTA**  
**BUSINESS TECHNOLOGIES, INC.**

1-6-1 Marunouchi Chiyoda-ku, Tokyo, Japan  
<http://www.biz.konicaminolta.com>



### Ecology & Environment

KONICA MINOLTA products are designed with the environment in mind.

- Energy Star
- Blue Angel Mark (BAM)
- RoHS Compliance
- WEEE Compliance
- Eco-friendly Toners
- Production at ISO Certified Factories

### Requirements for safe use

- Please read and follow the instruction manual to ensure safe operation.
- Only operate using appropriate power supply and voltage.
- Connecting the earth wire to an inappropriate place may cause explosion or electric shock. Please connect accordingly (Taiwan and the Philippines only).

### ISO15408 (EAL Level 3) Certification

These products comply with the security requirements of ISO15408 (EAL Level 3).

\* The ISO 15408 certification applies only to IT security capabilities. This certification is NOT a product guarantee.



This catalogue was printed using soy ink.